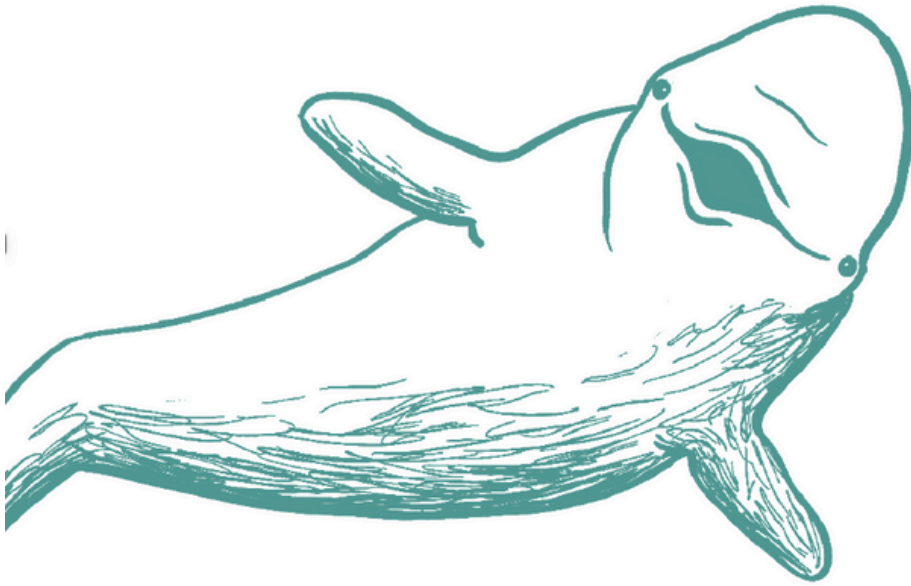


abound



**Activities designed for you and your child to do together –
to enjoy the “A Day at the Beach” theme and grow reading skills, too!**

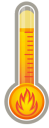
July 7– July 20, 2025

(1st gr – 3rd gr)

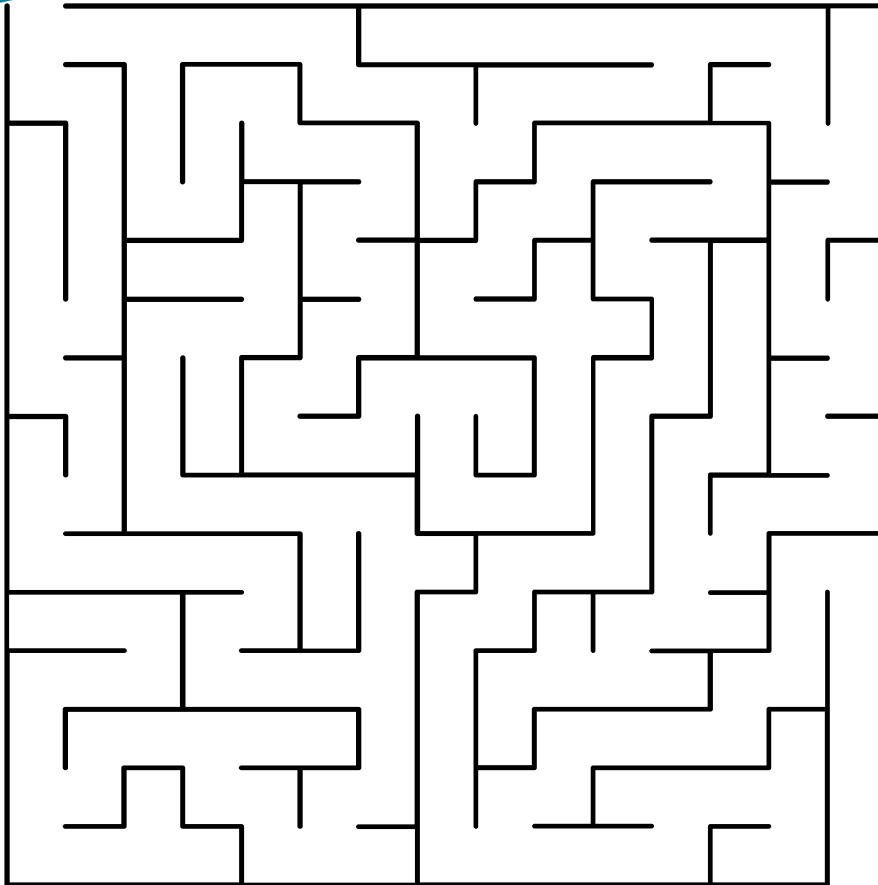
**Make sure to use the Abound app daily to start conversations about books and ideas
and build your child’s reading skills...playfully!**

Check the Abound website for answers when the theme is live!

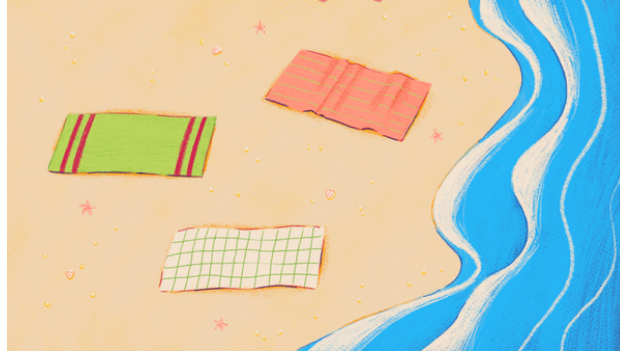
Hot & thirsty!



It's been a long, fun day at the beach,
but I need some shade and a cold drink.
Can you draw a line through the maze to
help me find the lemonade stand?



High Tide Approaching!



The Moon's gravity pulls the water and is the main reason we have high and low TIDES on Earth. At some beaches, the HIGH TIDE moves the water *much* further onto the beach and the beach area becomes *much* smaller. The beach gets bigger again at LOW TIDE. About every 12 ½ hours there is a HIGH TIDE, and about 6 hours later there is a LOW TIDE.

Circle the towel above that will stay dry the longest when the HIGH TIDE comes in!
Explain aloud why you chose that towel.

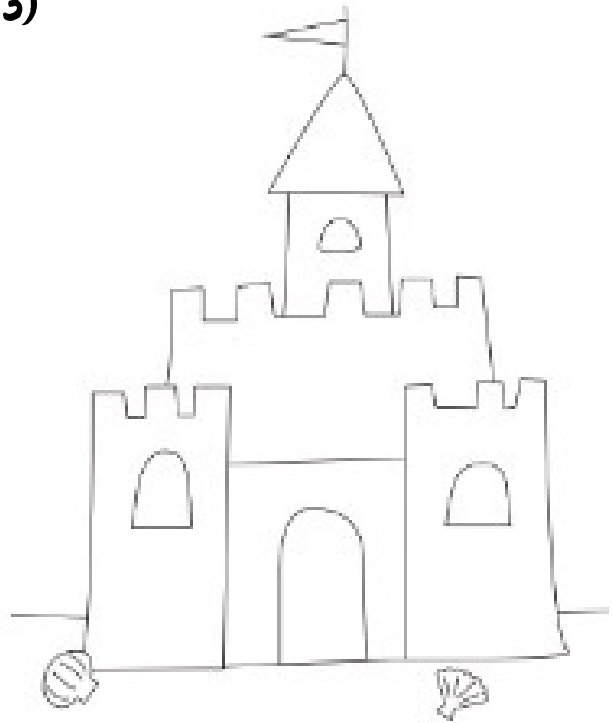
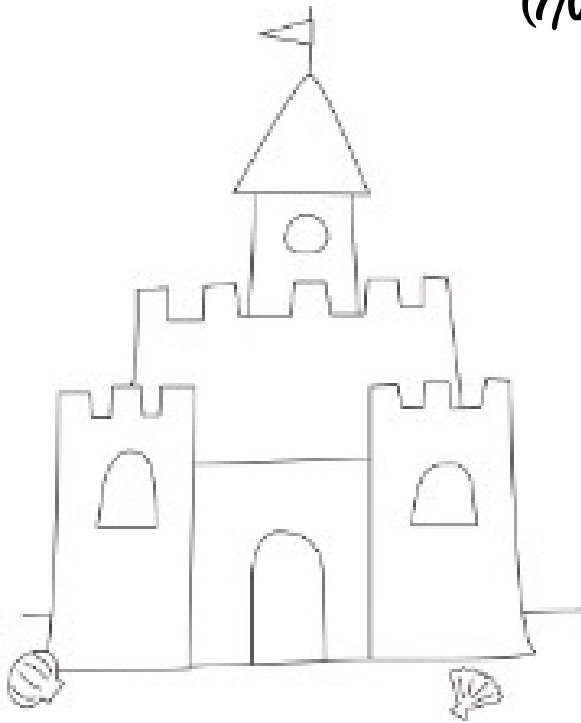
What rhymes with **TIDE**?

Can you come up with 10 words that rhyme with **TIDE**? Now look at all the words you've written and divide your words into two categories depending on how the words end. What do you notice?

WordUp!

SIMILAR

(7/07-7/13)



These sandcastles are SIMILAR, but not the exact same.
Can you find and circle 5 things about the sandcastles that
are different?

Then write the word SIMILAR below!

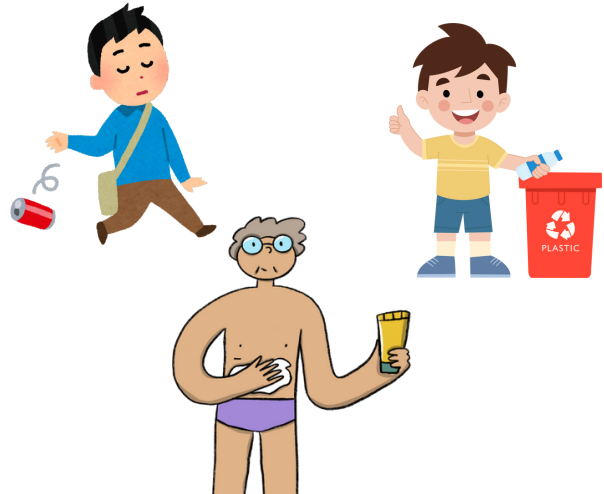
WordUp!

RESPONSIBLE

(7/14-7/20)

RESPONSIBLE means doing the right thing and making good choices, even when it's hard.

When Felix and his friends spent the day at the beach, some of them were really **RESPONSIBLE**, and others did things that were **IRRESPONSIBLE**. Can you find the pictures showing **RESPONSIBLE** (3) and **IRRESPONSIBLE** (2) things that happened?



IR is a prefix that means **NOT** or the **OPPOSITE of**. With help, can you add the **IR** prefix to **REGULAR**, **REVERSIBLE**, and **REAL** in the blanks below, then figure out what those new big words mean?
